

**TUBE O.D. FITTINGS**



SS2WCL--- 90° Butt weld Elbows ( 1.5 x CLR ), Mill Finish ID/OD						
Tube OD (Size)	A	Nominal Wall		Part Number 304	Part Number 316L	
1"	1.500	0.065		SS2WCL1-1-304	SS2WCL1-1-316	
1.5"	2.250	0.065		SS2WCL1-1.5-304	SS2WCL1-1.5-316	
2"	3.000	0.065		SS2WCL1-2-304	SS2WCL1-2-316	
2.5"	3.750	0.065		SS2WCL1-2.5-304	SS2WCL1-2.5-316	
3"	4.500	0.065		SS2WCL1-3-304	SS2WCL1-3-316	
4"	6.000	0.083		SS2WCL1-4-304	SS2WCL1-4-316	
6"	9.000	0.109		SS2WCL1-6-304	SS2WCL1-6-316	
8"	12.000	0.120		SS2WCL1-8-304	SS2WCL1-8-316	
10"	15.000	0.120		SS2WCL1-10-304	SS2WCL1-10-316	
12"	18.000	0.120		SS2WCL1-12-304	SS2WCL1-12-316	



SS2S--- 90° Butt weld Elbows w/tangent, Mill Finish ID/OD						
Tube OD (Size)	A	Nominal Wall		Part Number 304	Part Number 316L	
1"	2.062	0.065		SS2S1-1-304	SS2S1-1-316	
1.5"	2.937	0.065		SS2S1-1.5-304	SS2S1-1.5-316	
2"	4.062	0.065		SS2S1-2-304	SS2S1-2-316	
2.5"	5.187	0.065		SS2S1-2.5-304	SS2S1-2.5-316	
3"	6.312	0.065		SS2S1-3-304	SS2S1-3-316	
4"	8.312	0.083		SS2S1-4-304	SS2S1-4-316	



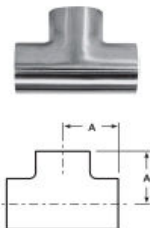
SS2WUL---180° Butt weld Return Bends, Mill Finish ID/OD						
Tube OD (Size)	A	B	Nominal Wall	Part Number 304	Part Number 316L	
1"	3.000	2.000	0.065	SS2WUL1-1-304	SS2WUL1-1-316	
1.5"	4.500	3.000	0.065	SS2WUL1-1.5-304	SS2WUL1-1.5-316	
2"	6.000	4.000	0.065	SS2WUL1-2-304	SS2WUL1-2-316	
2.5"	7.500	5.000	0.065	SS2WUL1-2.5-304	SS2WUL1-2.5-316	
3"	9.000	6.000	0.065	SS2WUL1-3-304	SS2WUL1-3-316	
4"	12.000	8.000	0.083	SS2WUL1-4-304	SS2WUL1-4-316	



SS2WK--- 45° Butt weld Elbows, less tangent, Mill Finish ID/OD						
Tube OD (Size)	A	R	Nominal Wall	Part Number 304	Part Number 316L	
1"	0.625	1.500	0.065	SS2WK1-1-304	SS2WK1-1-316	
1.5"	0.937	2.250	0.065	SS2WK1-1.5-304	SS2WK1-1.5-316	
2"	1.250	3.000	0.065	SS2WK1-2-304	SS2WK1-2-316	
2.5"	1.562	3.750	0.065	SS2WK1-2.5-304	SS2WK1-2.5-316	
3"	1.875	4.500	0.065	SS2WK1-3-304	SS2WK1-3-316	
4"	2.500	6.000	0.083	SS2WK1-4-304	SS2WK1-4-316	
6"	3.750	9.000	0.109	SS2WK1-6-304	SS2WK1-6-316	
8"	5.000	12.000	0.120	SS2WK1-8-304	SS2WK1-8-316	
10"	6.250	15.000	0.120	SS2WK1-10-304	SS2WK1-10-316	
12"	7.500	18.000	0.120	SS2WK1-12-304	SS2WK1-12-316	

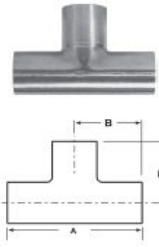


SS2KS--- 45° Butt weld Elbows w/tangent, Mill Finish ID/OD						
Tube OD (Size)	A	Nominal Wall		Part Number 304	Part Number 316L	
1"	1.188	0.065		SS2KS1-1-304	SS2KS1-1-316	
1.5"	1.625	0.065		SS2KS1-1.5-304	SS2KS1-1.5-316	
2"	2.312	0.065		SS2KS1-2-304	SS2KS1-2-316	
2.5"	3.000	0.065		SS2KS1-2.5-304	SS2KS1-2.5-316	
3"	3.688	0.065		SS2KS1-3-304	SS2KS1-3-316	
4"	4.812	0.083		SS2KS1-4-304	SS2KS1-4-316	

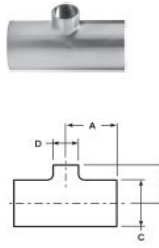


SS7WWW--- Short Butt weld Tees, Mill Finish ID/OD						
Tube OD (Size)	A	Nominal Wall		Part Number 304	Part Number 316L	
1"	1.125	0.065		SS7WWW1-1-304	SS7WWW1-1-316	
1.5"	1.656	0.065		SS7WWW1-1.5-304	SS7WWW1-1.5-316	
2"	2.062	0.065		SS7WWW1-2-304	SS7WWW1-2-316	
2.5"	2.344	0.065		SS7WWW1-2.5-304	SS7WWW1-2.5-316	
3"	2.594	0.065		SS7WWW1-3-304	SS7WWW1-3-316	
4"	3.438	0.083		SS7WWW1-4-304	SS7WWW1-4-316	

**TUBE O.D. FITTINGS**



SS7W--- Long Butt Weld Tees, Mill Finish ID/OD						
Tube OD (Size)	A	B	Nominal Wall	Part Number 304	Part Number 316L	
1"	3.750	1.875	0.065	SS7W1-1-304	SS7W1-1-316	
1.5"	4.500	2.250	0.065	SS7W1-1.5-304	SS7W1-1.5-316	
2"	6.000	3.000	0.065	SS7W1-2-304	SS7W1-2-316	
2.5"	6.000	3.000	0.065	SS7W1-2.5-304	SS7W1-2.5-316	
3"	6.500	3.250	0.065	SS7W1-3-304	SS7W1-3-316	
4"	7.750	3.875	0.083	SS7W1-4-304	SS7W1-4-316	
6"	11.25	5.625	0.109	SS7W1-6-304	SS7W1-6-316	
8"	14.00	7.000	0.120	SS7W1-8-304	SS7W1-8-316	
10"	17.00	8.500	0.120	SS7W1-10-304	SS7W1-10-316	
12"	20.00	10.00	0.120	SS7W1-12-304	SS7W1-12-316	



SS7RWWW: Butt Weld Reducing Tees, Mill Finish ID/OD						
Tube OD (Size)	A	B	C	D	Part Number 304	Part Number 316L
3/4" x 1/2"	2.125	2.125	0.750	0.500		SS7RWWW1-0.75 x 0.5-316
1" x 1/2"	2.125	2.125	1.000	0.500		SS7RWWW1- 1 x 0.5- 316
1" x 3/4"	2.125	2.125	1.000	0.750		SS7RWWW1- 1 x 0.75- 316
1.5" x 1/2"	2.250	2.250	1.500	0.500		SS7RWWW1- 1.5 x 0.5- 316
1.5" x 3/4"	2.250	2.250	1.500	0.750		SS7RWWW1- 1.5 x 0.75- 316
1.5" x 1"	1.656	1.375	1.500	1.000	SS7RWWW1- 1.5 x 1- 304	SS7RWWW1- 1.5 x 1- 316
2" x 1"	2.062	1.625	2.000	1.000	SS7RWWW1- 2 x 1- 304	SS7RWWW1- 2 x 1- 316
2" x 1.5"	2.062	1.906	1.500	1.500	SS7RWWW1- 2 x 1.5- 304	SS7RWWW1- 2 x 1.5- 316
2.5" x 1.5"	2.344	2.156	2.500	1.500	SS7RWWW1- 2.5 x 1.5- 304	SS7RWWW1- 2.5 x 1.5- 316
2.5" x 2"	2.344	2.312	2.500	2.000	SS7RWWW1- 2.5 x 2- 304	SS7RWWW1- 2.5 x 2- 316
3" x 1.5"	2.594	2.406	3.000	1.500	SS7RWWW1- 3 x 1.5- 304	SS7RWWW1- 3 x 1.5- 316
3" x 2"	2.594	2.562	3.000	2.000	SS7RWWW1- 3 x 2- 304	SS7RWWW1- 3 x 2- 316
3" x 2.5"	2.594	2.594	3.000	2.500	SS7RWWW1- 3 x 2.5- 304	SS7RWWW1- 3 x 2.5- 316
4" x 1.5"	3.438	2.906	4.000	1.500	SS7RWWW1- 4 x 1.5- 304	SS7RWWW1- 4 x 1.5- 316
4" x 2"	3.438	3.062	4.000	2.000	SS7RWWW1- 4 x 2- 304	SS7RWWW1- 4 x 2- 316
4" x 2.5"	3.438	3.094	4.000	2.500	SS7RWWW1- 4 x 2.5- 304	SS7RWWW1- 4 x 2.5- 316
4" x 3"	3.438	3.094	4.000	3.000	SS7RWWW1- 4 x 3- 304	SS7RWWW1- 4 x 3- 316
6" x 2"	5.625	4.500	6.000	2.000	SS7RWWW1- 6 x 2- 304	SS7RWWW1- 6 x 2- 316
6" x 3"	5.625	4.875	6.000	3.000	SS7RWWW1- 6 x 3- 304	SS7RWWW1- 6 x 3- 316
6" x 4"	5.625	5.125	6.000	4.000	SS7RWWW1- 6 x 4- 304	SS7RWWW1- 6 x 4- 316

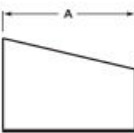
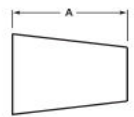


SS16W-- WELD End Caps			
Tube OD (Size)	A	Part Number 304	Part Number 316L
1/2"	0.250	SS16W-0.5-304	SS16W-0.5-316
3/4"	0.312	SS16W-0.75-304	SS16W-0.75-316
1"	0.375	SS16W-1-304	SS16W-1-316
1.5"	0.562	SS16W-1.5-304	SS16W-1.5-316
2"	0.750	SS16W-2-304	SS16W-2-316
2.5"	1.000	SS16W-2.5-304	SS16W-2.5-316
3"	1.250	SS16W-3-304	SS16W-3-316
4"	1.500	SS16W-4-304	SS16W-4-316
6"	2.250	SS16W-6-304	SS16W-6-316
8"	2.500	SS16W-8-304	SS16W-8-316
10"	3.000	SS16W-10-304	SS16W-10-316
12"	3.000	SS16W-12-304	SS16W-12-316



SS19WB--- Weld End x Male NPT				
Tube OD (Size)	A	Nominal Wall	Part Number 304	Part Number 316L
1/2"	1.625	0.065	SS19WB-0.5-304	SS19WB-0.5-316
3/4"	1.625	0.065	SS19WB-0.75-304	SS19WB-0.75-316
1"	1.750	0.065	SS19WB-1-304	SS19WB-1-316
1.5"	1.750	0.065	SS19WB-1.5-304	SS19WB-1.5-316
2"	1.812	0.065	SS19WB-2-304	SS19WB-2-316
2.5"	2.312	0.065	SS19WB-2.5-304	SS19WB-2.5-316
3"	2.500	0.065	SS19WB-3-304	SS19WB-3-316
4"	2.562	0.083	SS19WB-4-304	SS19WB-4-316
6"	3.000	0.109	SS19WB-6-304	SS19WB-6-316

**TUBE O.D. FITTINGS**



SS22WB--- Weld End x <i>Female NPT</i>						
Tube OD (Size)	A	Nominal Wall		Part Number 304	Part Number 316L	
1/2"	1.250	0.065		SS22WB-0.5-304	SS22WB-0.5-316	
3/4"	1.625	0.065		SS22WB-0.75-304	SS22WB-0.75-316	
1"	1.125	0.065		SS22WB-1-304	SS22WB-1-316	
1.5"	1.437	0.065		SS22WB-1.5-304	SS22WB-1.5-316	
2"	1.437	0.065		SS22WB-2-304	SS22WB-2-316	
2.5"	1.625	0.065		SS22WB-2.5-304	SS22WB-2.5-316	
3"	1.812	0.065		SS22WB-3-304	SS22WB-3-316	
4"	2.000	0.083		SS22WB-4-304	SS22WB-4-316	

SS28Y--- Buttweld True Y, Mill Finish ID/OD						
Tube OD (Size)	A	B	Nominal Wall	Part Number 304	Part Number 316L	
1"	1.500	1.625	0.065	SS28Y1-1-304	SS28Y1-1-316	
1.5"	2.250	2.125	0.065	SS28Y1-1.5-304	SS28Y1-1.5-316	
2"	3.000	2.750	0.065	SS28Y1-2-304	SS28Y1-2-316	
2.5"	3.750	2.625	0.065	SS28Y1-2.5-304	SS28Y1-2.5-316	
3"	4.500	3.500	0.065	SS28Y1-3-304	SS28Y1-3-316	
4"	6.000	4.500	0.083	SS28Y1-4-304	SS28Y1-4-316	

SS28L-- Buttweld Lateral, Mill Finish ID/OD						
Tube OD (Size)	A	B	C	Nominal Wall	Part Number 304	Part Number 316L
1"	7.000	2.000	5.000	0.065	SS28L1-1-304	SS28L1-1-316
1.5"	8.188	2.000	6.188	0.065	SS28L1-1.5-304	SS28L1-1.5-316
2"	9.125	2.000	7.125	0.065	SS28L1-2-304	SS28L1-2-316
2.5"	10.50	2.000	8.500	0.065	SS28L1-2.5-304	SS28L1-2.5-316
3"	10.79	2.000	8.875	0.065	SS28L1-3-304	SS28L1-3-316
4"	13.75	3.000	10.75	0.083	SS28L1-4-304	SS28L1-4-316
6"	16.50	4.000	14.50	0.109	SS28L1-6-304	SS28L1-6-316

SS31W-- Buttweld Concentric Reducers, Mill Finish ID/OD						
Tube OD (Size)	A	B	C	Nominal Wall	Part Number 304	Part Number 316L
3/4" x 1/2"	1.000	0.750	0.500	0.065		SS31W1- .75 x .50- 316L
1" x 1/2"	1.500	1.000	0.500	0.065		SS31W1- 1 x .50- 316L
1" x 3/4"	1.000	1.000	0.750	0.065		SS31W1- 1 x .75- 316L
1.5" x 1/2"	3.500	1.500	0.500	0.065		SS31W1- 1.5 x .50- 316L
1.5" x 3/4"	3.000	1.500	0.750	0.065		SS31W1- 1.5 x .75- 316L
1.5" x 1"	2.000	1.500	1.000	0.065	SS31W1- 1.5 x 1- 304	SS31W1- 1.5 x 1- 316L
2" x 1"	4.000	2.000	1.000	0.065	SS31W1- 2 x 1- 304	SS31W1- 2 x 1- 316L
2" x 1.5"	2.000	1.500	1.500	0.065	SS31W1- 2 x 1.5- 304	SS31W1- 2 x 1.5- 316L
2.5" x 1.5"	4.000	2.500	1.500	0.065	SS31W1- 2.5 x 1.5- 304	SS31W1- 2.5 x 1.5- 316L
2.5" x 2"	2.000	2.500	2.000	0.065	SS31W1- 2.5 x 2- 304	SS31W1- 2.5 x 2- 316L
3" x 1.5"	6.000	3.000	1.500	0.065	SS31W1- 3 x 1.5- 304	SS31W1- 3 x 1.5- 316L
3" x 2"	4.000	3.000	2.000	0.065	SS31W1- 3 x 2- 304	SS31W1- 3 x 2- 316L
3" x 2.5"	2.000	3.000	2.500	0.065	SS31W1- 3 x 2.5- 304	SS31W1- 3 x 2.5- 316L
4" x 1.5"	10.00	4.000	1.500	0.083	SS31W1- 4 x 1.5- 304	SS31W1- 4 x 1.5- 316L
4" x 2"	8.000	4.000	2.000	0.083	SS31W1- 4 x 2- 304	SS31W1- 4 x 2- 316L
4" x 2.5"	6.000	4.000	2.500	0.083	SS31W1- 4 x 2.5- 304	SS31W1- 4 x 2.5- 316L
4" x 3"	4.000	4.000	3.000	0.083	SS31W1- 4 x 3- 304	SS31W1- 4 x 3- 316L
6" x 2"	5.500	6.000	2.000	0.109	SS31W1- 6 x 2- 304	SS31W1- 6 x 2- 316L
6" x 3"	5.500	6.000	3.000	0.109	SS31W1- 6 x 3- 304	SS31W1- 6 x 3- 316L
6" x 4"	5.500	6.000	4.000	0.109	SS31W1- 6 x 4- 304	SS31W1- 6 x 4- 316L

SS32W-- Buttweld Eccentric Reducers, Mill Finish ID/OD						
Tube OD (Size)	A	B	C	Nominal Wall	Part Number 304	Part Number 316L
3/4" x 1/2"	1.000	0.750	0.500	0.065		SS32W1- .75 x .50- 316L
1" x 1/2"	2.000	1.000	0.500	0.065		SS32W1- 1 x .50- 316L
1" x 3/4"	1.000	1.000	0.750	0.065		SS32W1- 1 x .75- 316L
1.5" x 1/2"	4.000	1.500	0.500	0.065		SS32W1- 1.5 x .50- 316L
1.5" x 3/4"	3.000	1.500	0.750	0.065		SS32W1- 1.5 x .75- 316L
1.5" x 1"	2.000	1.500	1.000	0.065	SS32W1- 1.5 x 1- 304	SS32W1- 1.5 x 1- 316L
2" x 1"	4.000	2.000	1.000	0.065	SS32W1- 2 x 1- 304	SS32W1- 2 x 1- 316L
2" x 1.5"	2.000	1.500	1.500	0.065	SS32W1- 2 x 1.5- 304	SS32W1- 2 x 1.5- 316L
2.5" x 1.5"	4.000	2.500	1.500	0.065	SS32W1- 2.5 x 1.5- 304	SS32W1- 2.5 x 1.5- 316L
2.5" x 2"	2.000	2.500	2.000	0.065	SS32W1- 2.5 x 2- 304	SS32W1- 2.5 x 2- 316L
3" x 1.5"	6.000	3.000	1.500	0.065	SS32W1- 3 x 1.5- 304	SS32W1- 3 x 1.5- 316L
3" x 2"	4.000	3.000	2.000	0.065	SS32W1- 3 x 2- 304	SS32W1- 3 x 2- 316L
3" x 2.5"	2.000	3.000	2.500	0.065	SS32W1- 3 x 2.5- 304	SS32W1- 3 x 2.5- 316L
4" x 1.5"	10.00	4.000	1.500	0.083	SS32W1- 4 x 1.5- 304	SS32W1- 4 x 1.5- 316L
4" x 2"	8.000	4.000	2.000	0.083	SS32W1- 4 x 2- 304	SS32W1- 4 x 2- 316L
4" x 2.5"	6.000	4.000	2.500	0.083	SS32W1- 4 x 2.5- 304	SS32W1- 4 x 2.5- 316L
4" x 3"	4.000	4.000	3.000	0.083	SS32W1- 4 x 3- 304	SS32W1- 4 x 3- 316L
6" x 2"	5.500	6.000	2.000	0.109	SS32W1- 6 x 2- 304	SS32W1- 6 x 2- 316L
6" x 3"	5.500	6.000	3.000	0.109	SS32W1- 6 x 3- 304	SS32W1- 6 x 3- 316L
6" x 4"	5.500	6.000	4.000	0.109	SS32W1- 6 x 4- 304	SS32W1- 6 x 4- 316L

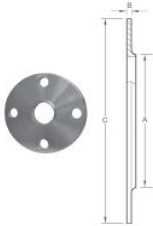
**TUBE O.D. FITTINGS**



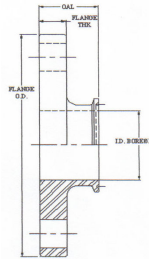
SST14VBA--- Stub End-- Type "A"						
Tube OD (Size)	A	B	C	D	Part Number 316L	
1/2"	1.625	2.000	0.065	0.500	SST14VBA-0.5-316	
3/4"	1.687	2.000	0.065	0.750	SST14VBA-0.75-316	
1"	2.000	2.000	0.065	1.000	SST14VBA-1-316	
1.5"	2.875	2.000	0.065	1.500	SST14VBA-1.5-316	
2"	3.625	2.500	0.065	2.000	SST14VBA-2-316	
2.5"	4.125	2.500	0.065	2.500	SST14VBA-2.5-316	
3"	5.000	2.500	0.065	3.000	SST14VBA-3-316	
4"	6.187	2.500	0.083	4.000	SST14VBA-4-316	
6"	8.500	3.000	0.109	6.000	SST14VBA-6-316	



SS38SL-- Tube Flanges						
Tube OD (Size)	A	B	C	# & Dia. Bolt Holes	Part Number 304	Part Number 316L
1"	4.250	0.375	1.063	4/ .625	SS38SL-1-304	SS38SL-1-316
1.5"	5.000	0.375	1.563	4/ .625	SS38SL-1.5-304	SS38SL-1.5-316
2"	6.000	0.437	2.063	4/ .750	SS38SL-2-304	SS38SL-2-316
2.5"	7.000	0.437	2.563	4/ .750	SS38SL-2.5-304	SS38SL-2.5-316
3"	7.500	0.500	3.063	4/ .750	SS38SL-3-304	SS38SL-3-316
4"	9.000	0.562	4.063	8/ .750	SS38SL-4-304	SS38SL-4-316
6"	11.00	0.562	6.063	8/ .750	SS38SL-6-304	SS38SL-6-316
8"	13.50	0.687	8.063	8/ .750	SS38SL-8-304	SS38SL-8-316



SS38W-- Weld Neck Flanges						
Tube OD (Size)	A	B	C	# & Dia. Bolt Holes	Part Number 304	Part Number 316L
1"	1.000	0.375	4.250	4/ .625	SS38W-1-304	SS38W-1-316
1.5"	1.500	0.375	5.000	4/ .625	SS38W-1.5-304	SS38W-1.5-316
2"	2.000	0.437	6.000	4/ .750	SS38W-2-304	SS38W-2-316
2.5"	2.500	0.437	7.000	4/ .750	SS38W-2.5-304	SS38W-2.5-316
3"	3.000	0.500	7.500	4/ .750	SS38W-3-304	SS38W-3-316
4"	4.000	0.562	9.000	8/ .750	SS38W-4-304	SS38W-4-316
6"	6.000	0.562	11.00	8/ .750	SS38W-6-304	SS38W-6-316



SS51-14MP--- Flange x Clamp Adapter				
Tube OD (Size)	A		Part Number 304	Part Number 316L
1/2"	1.625		SS51-14MP-0.5-304	SS51-14MP-0.5-316
3/4"	1.625		SS51-14MP-0.75-304	SS51-14MP-0.75-316
1"	1.625		SS51-14MP-1-304	SS51-14MP-1-316
1.5"	1.625		SS51-14MP-1.5-304	SS51-14MP-1.5-316
2"	1.750		SS51-14MP-2-304	SS51-14MP-2-316
2.5"	1.750		SS51-14MP-2.5-304	SS51-14MP-2.5-316
3"	1.750		SS51-14MP-3-304	SS51-14MP-3-316
4"	1.750		SS51-14MP-4-304	SS51-14MP-4-316
6"	2.125		SS51-14MP-6-304	SS51-14MP-6-316