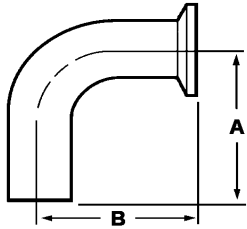
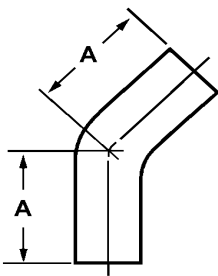


SST2S-- 90° Weld Bio-Pharm Elbow			
Tube OD (Size)	A	Nominal Wall	Part Number 316L
1/2"	3.000	0.065	SST2S-0.50-316
3/4"	3.000	0.065	SST2S-0.75-316
1"	3.000	0.065	SST2S-1-316
1.5"	3.750	0.065	SST2S-1.5-316
2"	4.750	0.065	SST2S-2-316
2.5"	5.500	0.065	SST2S-2.5-316
3"	6.250	0.065	SST2S-3-316
4"	8.000	0.083	SST2S-4-316

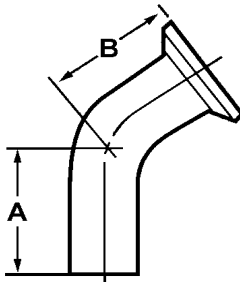


SST2CM-- Clamp x Weld 90° Elbow			
Tube OD (Size)	A	B	Part Number 316L
1/2"	3.000	3.500	SST2CM-0.50-316
3/4"	3.000	3.500	SST2CM-0.75-316
1"	3.000	3.500	SST2CM-1-316
1.5"	3.750	4.250	SST2CM-1.5-316
2"	4.750	5.250	SST2CM-2-316
2.5"	5.500	6.000	SST2CM-2.5-316
3"	6.250	6.750	SST2CM-3-316
4"	8.000	8.625	SST2CM-4-316

Note:
Not to
BPE
Dimension

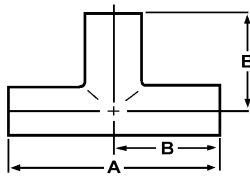


SST2KS-- 45° Weld Bio-Pharm Elbow			
Tube OD (Size)	A	Nominal Wall	Part Number 316L
1/2"	2.250	0.065	SST2KS-0.50-316
3/4"	2.250	0.065	SST2KS-0.75-316
1"	2.250	0.065	SST2KS-1-316
1.5"	2.500	0.065	SST2KS-1.5-316
2"	3.000	0.065	SST2KS-2-316
2.5"	3.375	0.065	SST2KS-2.5-316
3"	3.625	0.065	SST2KS-3-316
4"	4.500	0.083	SST2KS-4-316

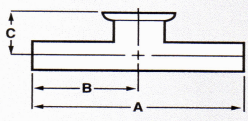


SST2KM-- Clamp x 45° Weld Elbow			
Tube OD (Size)	A	B	Part Number 316L
1/2"	2.250	2.750	SST2KM-0.50-316
3/4"	2.250	2.750	SST2KM-0.75-316
1"	2.250	2.750	SST2KM-1-316
1.5"	2.500	3.000	SST2KM-1.5-316
2"	3.000	3.500	SST2KM-2-316
2.5"	3.375	3.875	SST2KM-2.5-316
3"	3.625	4.125	SST2KM-3-316
4"	4.500	5.125	SST2KM-4-316

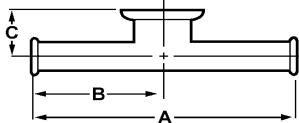
Note:
Not to
BPE
Dimension



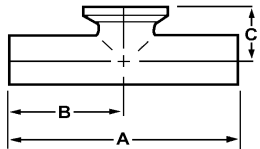
SST7WWW--- Weld Bio-Pharm Tee			
Tube OD (Size)	A	B	Part Number 316L
1/2"	3.750	1.875	SST7WWW-0.50-316
3/4"	4.000	2.000	SST7WWW-0.75-316
1"	4.250	2.125	SST7WWW-1-316
1.5"	4.750	2.375	SST7WWW-1.5-316
2"	5.750	2.875	SST7WWW-2-316
2.5"	6.250	3.125	SST7WWW-2.5-316
3"	6.750	3.375	SST7WWW-3-316
4"	8.250	4.125	SST7WWW-4-316



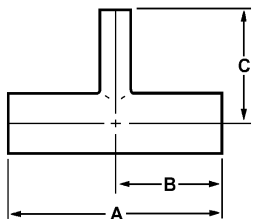
SST7-54WWC-- Instrument Tee-- <i>Butt Weld Ends x Clamp Branch</i>				
Tube OD (Size)	A	B	C	Part Number
1/2" x 3/4"	5.250	2.625	0.875	SST7-54WWC-0.50 x 0.75-316
1/2" x 1"	5.500	2.750	0.875	SST7-54WWC-0.50 x 1-316
1/2" x 1.5"	6.000	3.000	0.875	SST7-54WWC-0.50 x 1.5-316
1/2" x 2"	6.500	3.250	1.000	SST7-54WWC-0.50 x 2-316
3/4" x 1"	5.500	2.750	1.000	SST7-54WWC-0.75 x 1-316
3/4" x 1.5"	6.000	3.000	1.000	SST7-54WWC-0.75 x 1.5-316
3/4" x 2"	6.500	3.250	1.125	SST7-54WWC-0.75 x 2-316
1" x 1.5"	6.000	3.000	1.125	SST7-54WWC-1 x 1.5-316
1" x 2"	6.500	3.250	1.250	SST7-54WWC-1 x 2-316
1.5" x 2"	6.500	3.250	1.500	SST7-54WWC-1.5 x 2-316



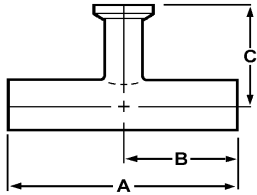
SST7-54MP-- Instrument Tee-- <i>All Ends Clamp</i>				
Tube OD (Size)	A	B	C	Part Number
1/2" x 3/4"	5.250	2.625	0.875	SST7-54MP-0.50 x 0.75-316
1/2" x 1"	5.500	2.750	0.875	SST7-54MP-0.50 x 1-316
1/2" x 1.5"	6.000	3.000	0.875	SST7-54MP-0.50 x 1.5-316
1/2" x 2"	6.500	3.250	1.000	SST7-54MP-0.50 x 2-316
3/4" x 1"	5.500	2.750	1.000	SST7-54MP-0.75 x 1-316
3/4" x 1.5"	6.000	3.000	1.000	SST7-54MP-0.75 x 1.5-316
3/4" x 2"	6.500	3.250	1.125	SST7-54MP-0.75 x 2-316
1" x 1.5"	6.000	3.000	1.125	SST7-54MP-1 x 1.5-316
1" x 2"	6.500	3.250	1.250	SST7-54MP-1 x 2-316
1.5" x 2"	6.500	3.250	1.500	SST7-54MP-1.5 x 2-316



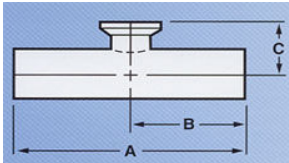
SST7WWCS--- Short Outlet Tee				
Tube OD (Size)	A	B	C	Part Number
1/2"	3.750	1.875	1.000	SST7WWCS-0.50-316
3/4"	4.000	2.000	1.125	SST7WWCS-0.75-316
1"	4.250	2.000	1.125	SST7WWCS-1-316
1.5"	4.750	2.125	1.375	SST7WWCS-1.5-316
2"	5.750	2.875	1.625	SST7WWCS-2-316
2.5"	6.250	3.125	1.875	SST7WWCS-2.5-316
3"	6.750	3.375	2.125	SST7WWCS-3-316
4"	8.250	4.125	2.750	SST7WWCS-4-316



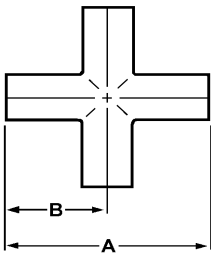
SST7RWWW--- Reducing Weld Bio-Pharm Tee				
Tube OD (Size)	A	B	C	Part Number
3/4" x 1/2"	4.000	2.000	2.000	SST7RWWW- 0.75 x 0.50- 316
1" x 1/2"	4.250	2.125	2.125	SST7RWWW- 1 x 0.50- 316
1" x 3/4"	4.250	2.125	2.125	SST7RWWW- 1 x 0.75- 316
1.5" x 1/2"	4.750	2.375	2.375	SST7RWWW- 1.5 x 0.50- 316
1.5" x 3/4"	4.750	2.375	2.375	SST7RWWW- 1.5 x 0.75- 316
1.5" x 1"	4.750	2.375	2.375	SST7RWWW- 1.5 x 1- 316
2" x 1"	5.750	2.875	2.625	SST7RWWW- 2 x 1- 316
2" x 1.5"	5.750	2.875	2.625	SST7RWWW- 2 x 1.5- 316
2.5" x 2"	6.250	3.125	2.875	SST7RWWW- 2.5 x 2- 316
3" x 2"	6.750	3.375	3.125	SST7RWWW- 3 x 2- 316
3" x 2.5"	6.750	3.375	3.125	SST7RWWW- 3 x 2.5- 316
4" x 2"	8.250	4.125	3.875	SST7RWWW- 4 x 2- 316
4" x 2.5"	8.250	4.125	3.875	SST7RWWW- 4 x 2.5- 316
4" x 3"	8.250	4.125	3.875	SST7RWWW- 4 x 3- 316



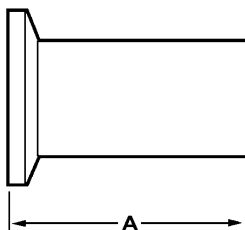
SST7RWWC--- Tee--Reducing Weld on Runs x Clamp on Branch				
Tube OD (Size)	A	B	C	Part Number 316L
3/4" x 1/2"	4.000	2.000	2.500	SST7RWWC- 0.75 x 0.50- 316
1" x 1/2"	4.250	2.125	2.625	SST7RWWC- 1 x 0.50- 316
1" x 3/4"	4.250	2.125	2.625	SST7RWWC- 1 x 0.75- 316
1.5" x 1/2"	4.750	2.375	2.875	SST7RWWC- 1.5 x 0.50- 316
1.5" x 3/4"	4.750	2.375	2.875	SST7RWWC- 1.5 x 0.75- 316
1.5" x 1"	4.750	2.375	2.875	SST7RWWC- 1.5 x 1- 316
2" x 1"	5.750	2.875	3.125	SST7RWWC- 2 x 1- 316
2" x 1.5"	5.750	2.875	3.125	SST7RWWC- 2 x 1.5- 316
2.5" x 2"	6.250	3.125	3.375	SST7RWWC- 2.5 x 2- 316
3" x 2"	6.750	3.375	3.625	SST7RWWC- 3 x 2- 316
3" x 2.5"	6.750	3.375	3.625	SST7RWWC- 3 x 2.5- 316
4" x 2"	8.250	4.125	4.375	SST7RWWC- 4 x 2- 316
4" x 2.5"	8.250	4.125	4.375	SST7RWWC- 4 x 2.5- 316
4" x 3"	8.250	4.125	4.375	SST7RWWC- 4 x 3- 316



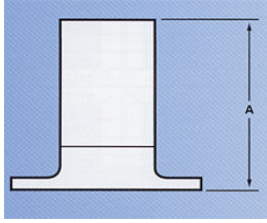
SST7RWWCS---Short Outlet Reducing Tee with Clamp on Branch x Weld on each Run				
Tube OD (Size)	A	B	C	Part Number 316L
3/4" x 1/2"	4.000	2.000	1.000	SST7RWWCS- 0.75 x 0.50- 316
1" x 1/2"	4.250	2.125	1.125	SST7RWWCS- 1 x 0.50- 316
1" x 3/4"	4.250	2.125	1.125	SST7RWWCS- 1 x 0.75- 316
1.5" x 1/2"	4.750	2.375	1.375	SST7RWWCS- 1.5 x 0.50- 316
1.5" x 3/4"	4.750	2.375	1.375	SST7RWWCS- 1.5 x 0.75- 316
1.5" x 1"	4.750	2.375	1.375	SST7RWWCS- 1.5 x 1- 316
2" x 1"	5.750	2.875	1.625	SST7RWWCS- 2 x 1- 316
2" x 1.5"	5.750	2.875	1.625	SST7RWWCS- 2 x 1.5- 316
2.5" x 2"	6.250	3.125	1.875	SST7RWWCS- 2.5 x 2- 316
3" x 2"	6.750	3.375	2.125	SST7RWWCS- 3 x 2- 316
3" x 2.5"	6.750	3.375	2.125	SST7RWWCS- 3 x 2.5- 316
4" x 2"	8.250	4.125	2.625	SST7RWWCS- 4 x 2- 316
4" x 2.5"	8.250	4.125	2.625	SST7RWWCS- 4 x 2.5- 316
4" x 3"	8.250	4.125	2.625	SST7RWWCS- 4 x 3- 316



SST9WWWW--- Weld Bio-Pharm Cross			
Tube OD (Size)	A	B	Part Number 316L
1/2"	3.750	1.875	SST9WWWW-0.50-316
3/4"	4.000	2.000	SST9WWWW-0.75-316
1"	4.250	2.125	SST9WWWW-1-316
1.5"	4.750	2.375	SST9WWWW-1.5-316
2"	5.750	2.875	SST9WWWW-2-316
2.5"	6.250	3.125	SST9WWWW-2.5-316
3"	6.750	3.375	SST9WWWW-3-316
4"	8.250	4.125	SST9WWWW-4-316

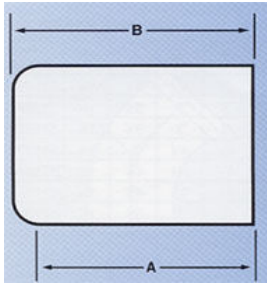


SST14AM7--- Bio-Pharm Ferrule		
Tube OD (Size)	A	Part Number 316L
1/2"	1.750	SST14AM7-0.50-316
3/4"	1.750	SST14AM7-0.75-316
1"	1.750	SST14AM7-1-316
1.5"	1.750	SST14AM7-1.5-316
2"	2.250	SST14AM7-2-316
2.5"	2.250	SST14AM7-2.5-316
3"	2.250	SST14AM7-3-316
4"	2.250	SST14AM7-4-316



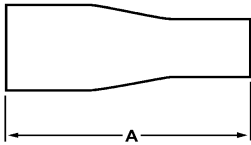
SST14VBA---Stub End- Type "A"					
Tube OD (Size)	A	B	C	D	Part Number 316L
1/2"	2.000				SST14VBA-0.5-316
3/4"	2.000				SST14VBA-0.75-316
1"	2.000				SST14VBA-1-316
1.5"	2.000				SST14VBA-1.5-316
2"	2.500				SST14VBA-2-316
2.5"	2.500				SST14VBA-2.5-316
3"	2.500				SST14VBA-3-316
4"	2.500				SST14VBA-4-316

Note:
Not to
BPE
Dimension

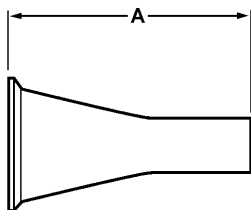


SST16W--- Weld Cap				
Tube OD (Size)	A	B		Part Number 316L
1/2"	1.500	1.687		SST16W-0.50-316
3/4"	1.500	1.687		SST16W-0.75-316
1"	1.500	1.687		SST16W-1-316
1.5"	1.500	1.919		SST16W-1.5-316
2"	1.500	2.044		SST16W-2-316
2.5"	1.500	2.015		SST16W-2.5-316
3"	1.750	2.500		SST16W-3-316
4"	2.500	3.056		SST16W-4-316

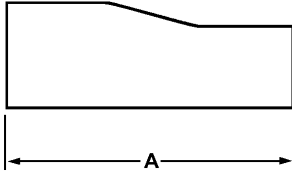
Note:
Not to
BPE
Dimension



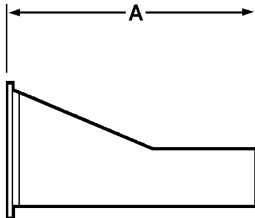
SST31E--- Weld Bio-Pharm <u>Concentric</u> Reducer		
Tube OD (Size)	A	Part Number 316L
3/4" x 1/2"	4.000	SST31E- 0.75 x 0.50- 316
1" x 1/2"	4.500	SST31E- 1 x 0.50- 316
1" x 3/4"	4.000	SST31E- 1 x 0.75- 316
1.5" x 1/2"	5.500	SST31E- 1.5 x 0.50- 316
1.5" x 3/4"	5.000	SST31E- 1.5 x 0.75- 316
1.5" x 1"	5.000	SST31E- 1.5 x 1- 316
2" x 1"	7.250	SST31E- 2 x 1- 316
2" x 1.5"	5.250	SST31E- 2 x 1.5- 316
2.5" x 2"	5.500	SST31E- 2.5 x 2- 316
3" x 2"	7.500	SST31E- 3 x 2- 316
3" x 2.5"	5.500	SST31E- 3 x 2.5- 316
4" x 2"	11.75	SST31E- 4 x 2- 316
4" x 2.5"	9.750	SST31E- 4 x 2.5- 316
4" x 3"	7.750	SST31E- 4 x 3- 316



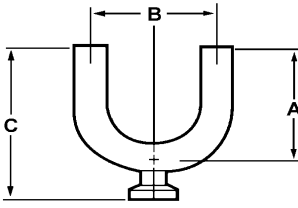
SST31CE--- Clamp x Weld Concentric Reducer		
Tube OD (Size)	A	Part Number 316L
3/4" x 1/2"	3.000	SST31CE- 0.75 x 0.50- 316
1" x 1/2"	3.500	SST31CE- 1 x 0.50- 316
1" x 3/4"	3.000	SST31CE- 1 x 0.75- 316
1.5" x 1/2"	4.500	SST31CE- 1.5 x 0.50- 316
1.5" x 3/4"	4.000	SST31CE- 1.5 x 0.75- 316
1.5" x 1"	4.000	SST31CE- 1.5 x 1- 316
2" x 1"	6.000	SST31CE- 2 x 1- 316
2" x 1.5"	4.000	SST31CE- 2 x 1.5- 316
2.5" x 2"	4.250	SST31CE- 2.5 x 2- 316
3" x 2"	6.250	SST31CE- 3 x 2- 316
3" x 2.5"	4.250	SST31CE- 3 x 2.5- 316
4" x 2"	10.38	SST31CE- 4 x 2- 316
4" x 2.5"	8.375	SST31CE- 4 x 2.5- 316
4" x 3"	6.375	SST31CE- 4 x 3- 316



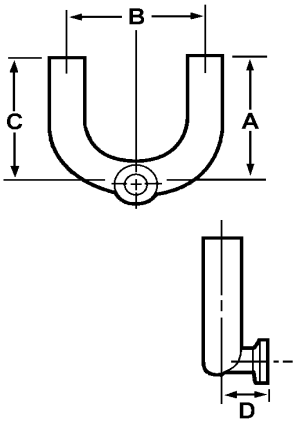
SST32E--- Weld Bio-Pharm <i>Eccentric</i> Reducer		
Tube OD (Size)	A	Part Number 316L
3/4" x 1/2"	4.000	SST32E- 0.75 x 0.50- 316
1" x 1/2"	4.500	SST32E- 1 x 0.50- 316
1" x 3/4"	4.000	SST32E- 1 x 0.75- 316
1.5" x 1/2"	5.500	SST32E- 1.5 x 0.50- 316
1.5" x 3/4"	5.000	SST32E- 1.5 x 0.75- 316
1.5" x 1"	5.000	SST32E- 1.5 x 1- 316
2" x 1"	7.250	SST32E- 2 x 1- 316
2" x 1.5"	5.250	SST32E- 2 x 1.5- 316
2.5" x 2"	5.500	SST32E- 2.5 x 2- 316
3" x 2"	7.500	SST32E- 3 x 2- 316
3" x 2.5"	5.500	SST32E- 3 x 2.5- 316
4" x 2"	11.75	SST32E- 4 x 2- 316
4" x 2.5"	9.750	SST32E- 4 x 2.5- 316
4" x 3"	7.750	SST32E- 4 x 3- 316



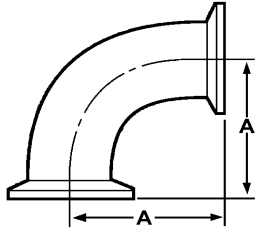
SST32CE--- Clamp x Weld Eccentric Reducer		
Tube OD (Size)	A	Part Number 316L
3/4" x 1/2"	3.000	SST32CE- 0.75 x 0.50- 316
1" x 1/2"	3.500	SST32CE- 1 x 0.50- 316
1" x 3/4"	3.000	SST32CE- 1 x 0.75- 316
1.5" x 1/2"	4.500	SST32CE- 1.5 x 0.50- 316
1.5" x 3/4"	4.000	SST32CE- 1.5 x 0.75- 316
1.5" x 1"	4.000	SST32CE- 1.5 x 1- 316
2" x 1"	6.000	SST32CE- 2 x 1- 316
2" x 1.5"	4.000	SST32CE- 2 x 1.5- 316
2.5" x 2"	4.250	SST32CE- 2.5 x 2- 316
3" x 2"	6.250	SST32CE- 3 x 2- 316
3" x 2.5"	4.250	SST32CE- 3 x 2.5- 316
4" x 2"	10.38	SST32CE- 4 x 2- 316
4" x 2.5"	8.375	SST32CE- 4 x 2.5- 316
4" x 3"	6.375	SST32CE- 4 x 3- 316



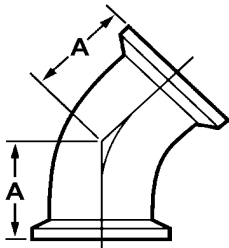
SSTUBWWC--- <u>BOTTOM</u> Outlet Use Point					
Tube OD (Size)	A	B	C	Part Number 316L	
3/4" x 1/2"	3.000	4.500	3.900	SSTUBWWC- 0.75 x 0.50-316	
1" x 1/2"	3.000	3.000	4.030	SSTUBWWC- 1 x 0.50-316	
1" x 3/4"	3.000	3.000	4.030	SSTUBWWC- 1 x 0.75-316	
1.5" x 1/2"	4.500	4.500	5.780	SSTUBWWC- 1.5 x 0.50-316	
1.5" x 3/4"	4.500	4.500	5.780	SSTUBWWC- 1.5 x 0.75-316	
1.5" x 1"	4.500	4.500	5.780	SSTUBWWC- 1.5 x 1-316	
2" x 1/2"	5.000	6.000	6.530	SSTUBWWC- 2 x 0.50-316	
2" x 3/4"	5.000	6.000	6.530	SSTUBWWC- 2 x 0.75-316	
2" x 1"	5.000	6.000	6.530	SSTUBWWC- 2 x 1-316	
2" x 1.5"	5.000	7.000	6.530	SSTUBWWC- 2 x 1.5-316	
2.5" x 1/2"	5.750	7.500	7.530	SSTUBWWC- 2.5 x 0.50-316	
2.5" x 3/4"	5.750	7.500	7.530	SSTUBWWC- 2.5 x 0.75-316	
2.5" x 1"	5.750	7.500	7.560	SSTUBWWC- 2.5 x 1-316	
2.5" x 1.5"	5.750	7.500	7.580	SSTUBWWC- 2.5 x 1.5-316	
2.5" x 2"	5.750	7.500	7.600	SSTUBWWC- 2.5 x 2-316	
3" x 1/2"	6.500	9.000	8.530	SSTUBWWC- 3 x 0.50-316	
3" x 3/4"	6.500	9.000	8.530	SSTUBWWC- 3 x 0.75-316	
3" x 1"	6.500	9.000	8.560	SSTUBWWC- 3 x 1-316	
3" x 1.5"	6.500	9.000	8.560	SSTUBWWC- 3 x 1.5-316	
3" x 2"	6.500	9.000	8.600	SSTUBWWC- 3 x 2-316	
3" x 2.5"	6.500	9.000	8.600	SSTUBWWC- 3 x 2.5-316	
4" x 1/2"	8.500	12.00	11.03	SSTUBWWC- 4 x 0.50-316	
4" x 3/4"	8.500	12.00	11.03	SSTUBWWC- 4 x 0.75-316	
4" x 1"	8.500	12.00	11.06	SSTUBWWC- 4 x 1-316	
4" x 1.5"	8.500	12.00	11.10	SSTUBWWC- 4 x 1.5-316	
4" x 2"	8.500	12.00	11.08	SSTUBWWC- 4 x 2-316	
4" x 2.5"	8.500	12.00	11.10	SSTUBWWC- 4 x 2.5-316	
4" x 3"	8.500	12.00	11.10	SSTUBWWC- 4 x 3-316	



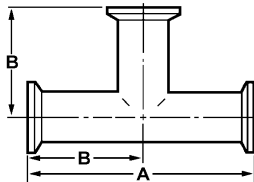
SSTUSWWC--- <u>SIDE</u> Outlet Use Point					
Tube OD (Size)	A	B	C	D	Part Number 316L
3/4" x 1/2"	3.000	4.500	3.125	1.125	SSTUSWWC- 0.75 x 0.50-316
1" x 1/2"	3.000	3.000	3.250	1.250	SSTUSWWC- 1 x 0.50-316
1" x 3/4"	3.000	3.000	3.125	1.250	SSTUSWWC- 1 x 0.75-316
1.5" x 1/2"	4.500	4.500	5.000	1.250	SSTUSWWC- 1.5 x 0.50-316
1.5" x 3/4"	4.500	4.500	4.875	1.250	SSTUSWWC- 1.5 x 0.75-316
1.5" x 1"	4.500	4.500	4.750	1.250	SSTUSWWC- 1.5 x 1-316
2" x 1/2"	5.000	6.000	5.750	1.750	SSTUSWWC- 2 x 0.50-316
2" x 3/4"	5.000	6.000	5.625	1.750	SSTUSWWC- 2 x 0.75-316
2" x 1"	5.000	6.000	5.550	1.750	SSTUSWWC- 2 x 1-316
2" x 1.5"	5.000	7.000	5.250	1.750	SSTUSWWC- 2 x 1.5-316
2.5" x 1/2"	5.750	7.500	6.750	2.000	SSTUSWWC- 2.5 x 0.50-316
2.5" x 3/4"	5.750	7.500	6.625	2.000	SSTUSWWC- 2.5 x 0.75-316
2.5" x 1"	5.750	7.500	6.500	2.000	SSTUSWWC- 2.5 x 1-316
2.5" x 1.5"	5.750	7.500	6.250	2.000	SSTUSWWC- 2.5 x 1.5-316
2.5" x 2"	5.750	7.500	6.000	2.000	SSTUSWWC- 2.5 x 2-316
3" x 1/2"	6.500	9.000	7.750	2.250	SSTUSWWC- 3 x 0.50-316
3" x 3/4"	6.500	9.000	7.625	2.250	SSTUSWWC- 3 x 0.75-316
3" x 1"	6.500	9.000	7.500	2.250	SSTUSWWC- 3 x 1-316
3" x 1.5"	6.500	9.000	7.250	2.250	SSTUSWWC- 3 x 1.5-316
3" x 2"	6.500	9.000	7.000	2.250	SSTUSWWC- 3 x 2-316
3" x 2.5"	6.500	9.000	6.750	2.250	SSTUSWWC- 3 x 2.5-316
4" x 1/2"	8.500	12.00	10.25	2.750	SSTUSWWC- 4 x 0.50-316
4" x 3/4"	8.500	12.00	10.13	2.750	SSTUSWWC- 4 x 0.75-316
4" x 1"	8.500	12.00	10.00	2.750	SSTUSWWC- 4 x 1-316
4" x 1.5"	8.500	12.00	9.750	2.750	SSTUSWWC- 4 x 1.5-316
4" x 2"	8.500	12.00	9.500	2.750	SSTUSWWC- 4 x 2-316
4" x 2.5"	8.500	12.00	9.250	2.750	SSTUSWWC- 4 x 2.5-316
4" x 3"	8.500	12.00	9.000	2.750	SSTUSWWC- 4 x 3-316



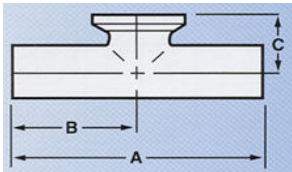
SSBP2CMP---- 90° Clamp Elbows			
Tube OD (Size)	A		Part Number 316L
1/2"	3.500		SSBP2CMP-0.5-316
3/4"	3.500		SSBP2CMP-0.75-316
1"	2.000		SSBP2CMP-1-316
1.5"	2.750		SSBP2CMP-1.5-316
2"	3.500		SSBP2CMP-2-316
2.5"	4.250		SSBP2CMP-2.5-316
3"	5.000		SSBP2CMP-3-316
4"	6.625		SSBP2CMP-4-316



SSBP2KMP---- 45° Clamp Elbows			
Tube OD (Size)	A		Part Number 316L
1/2"	2.750		SSBP2KMP-0.5-316
3/4"	2.750		SSBP2KMP-0.75-316
1"	1.125		SSBP2KMP-1-316
1.5"	1.437		SSBP2KMP-1.5-316
2"	1.750		SSBP2KMP-2-316
2.5"	2.062		SSBP2KMP-2.5-316
3"	2.375		SSBP2KMP-3-316
4"	3.125		SSBP2KMP-4-316

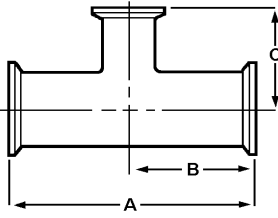


SSBP7MP---- Clamp Tees			
Tube OD (Size)	A	B	Part Number 316L
1/2"	4.500	2.250	SSBP7MP-0.5-316
3/4"	4.750	2.375	SSBP7MP-0.75-316
1"	5.250	2.625	SSBP7MP-1-316
1.5"	5.750	2.875	SSBP7MP-1.5-316
2"	6.750	3.375	SSBP7MP-2-316
2.5"	7.250	3.625	SSBP7MP-2.5-316
3"	7.750	3.875	SSBP7MP-3-316
4"	9.500	4.750	SSBP7MP-4-316

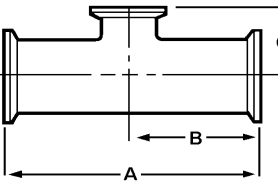


SSBP7MPS--- <u>Short</u> Outlet Clamp Tee				
Tube OD (Size)	A	B	C	Part Number 316L
1/2"	4.500	2.250	1.000	SSBP7MPS-0.5-316
3/4"	4.750	2.375	1.125	SSBP7MPS-0.75-316
1"	5.250	2.625	1.125	SSBP7MPS-1-316
1.5"	5.750	2.875	1.375	SSBP7MPS-1.5-316
2"	6.750	3.375	1.625	SSBP7MPS-2-316
2.5"	7.250	3.625	1.875	SSBP7MPS-2.5-316
3"	7.750	3.875	2.125	SSBP7MPS-3-316
4"	9.500	4.750	2.375	SSBP7MPS-4-316

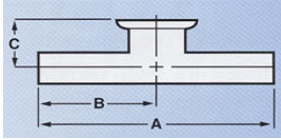
Note:
Not to
BPE
Dimension



SSBP7RMP--- Clamp Reducing Tees				
Tube OD (Size)	A	B	C	Part Number 316L
3/4" x 1/2"	5.000	2.500	2.500	SSBP7RMP- 0.75 x 0.50- 316L
1" x 1/2"	5.250	2.625	2.625	SSBP7RMP- 1 x 0.50- 316L
1" x 3/4"	5.250	2.625	2.625	SSBP7RMP- 1 x .75- 316L
1.5" x 1/2"	5.750	2.875	2.875	SSBP7RMP- 1.5 x 0.50- 316L
1.5" x 3/4"	5.750	2.875	2.875	SSBP7RMP- 1.5 x .75- 316L
1.5" x 1"	5.750	2.875	2.875	SSBP7RMP- 1.5 x 1- 316L
2" x 1/2"	6.750	3.375	3.125	SSBP7RMP- 2 x 0.50- 316L
2" x 3/4"	6.750	3.375	3.125	SSBP7RMP- 2 x .75- 316L
2" x 1"	6.750	3.375	3.125	SSBP7RMP- 2 x 1- 316L
2" x 1.5"	6.750	3.375	3.125	SSBP7RMP- 2 x 1.5- 316L
2.5" x 2"	7.250	3.625	3.375	SSBP7RMP- 2.5 x 2- 316L
3" x 1"	7.750	3.875	3.625	SSBP7RMP- 3 x 1- 316L
3" x 1.5"	7.750	3.875	3.625	SSBP7RMP- 3 x 1.5- 316L
3" x 2"	7.750	3.875	3.625	SSBP7RMP- 3 x 2- 316L
3" x 2.5"	7.750	3.875	3.625	SSBP7RMP- 3 x 2.5- 316L
4" x 1"	9.500	4.750	4.125	SSBP7RMP- 4 x 1- 316L
4" x 1.5"	9.500	4.750	4.125	SSBP7RMP- 4 x 1.5- 316L
4" x 2"	9.500	4.750	4.125	SSBP7RMP- 4 x 2- 316L
4" x 2.5"	9.500	4.750	4.125	SSBP7RMP- 4 x 2.5- 316L
4" x 3"	9.500	4.750	4.125	SSBP7RMP- 4 x 3- 316L

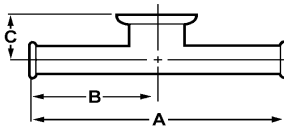


SSBP7RMPS--- <u>Short Outlet</u> Clamp Reducing Tees				
Tube OD (Size)	A	B	C	Part Number 316L
3/4" x 1/2"	5.000	2.500	1.000	SSBP7RMPS- 0.75 x 0.50- 316L
1" x 1/2"	5.250	2.625	1.125	SSBP7RMPS- 1 x 0.50- 316L
1" x 3/4"	5.250	2.625	1.125	SSBP7RMPS- 1 x .75- 316L
1.5" x 1/2"	5.750	2.875	1.375	SSBP7RMPS- 1.5 x 0.50- 316L
1.5" x 3/4"	5.750	2.875	1.375	SSBP7RMPS- 1.5 x .75- 316L
1.5" x 1"	5.750	2.875	1.375	SSBP7RMPS- 1.5 x 1- 316L
2" x 1/2"	6.750	3.375	1.625	SSBP7RMPS- 2 x 0.50- 316L
2" x 3/4"	6.750	3.375	1.625	SSBP7RMPS- 2 x .75- 316L
2" x 1"	6.750	3.375	1.625	SSBP7RMPS- 2 x 1- 316L
2" x 1.5"	6.750	3.375	1.625	SSBP7RMPS- 2 x 1.5- 316L
2.5" x 2"	7.250	3.625	1.875	SSBP7RMPS- 2.5 x 2- 316L
3" x 1"	7.750	3.875	2.125	SSBP7RMPS- 3 x 1- 316L
3" x 1.5"	7.750	3.875	2.125	SSBP7RMPS- 3 x 1.5- 316L
3" x 2"	7.750	3.875	2.125	SSBP7RMPS- 3 x 2- 316L
3" x 2.5"	7.750	3.875	2.125	SSBP7RMPS- 3 x 2.5- 316L
4" x 1"	9.500	4.750	2.625	SSBP7RMPS- 4 x 1- 316L
4" x 1.5"	9.500	4.750	2.625	SSBP7RMPS- 4 x 1.5- 316L
4" x 2"	9.500	4.750	2.625	SSBP7RMPS- 4 x 2- 316L
4" x 2.5"	9.500	4.750	2.625	SSBP7RMPS- 4 x 2.5- 316L
4" x 3"	9.500	4.750	2.625	SSBP7RMPS- 4 x 3- 316L



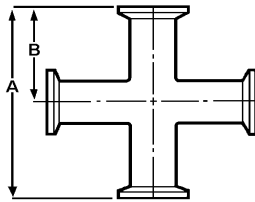
SST7-54WWC-- Instrument Tee-- <u>Butt-weld Ends</u> x Clamp Branch				
Tube OD (Size)	A	B	C	Part Number
1/2" x 3/4"	5.250	2.625	0.875	SST7-54WWC-0.50 x 0.75-316
1/2" x 1"	5.500	2.750	0.875	SST7-54WWC-0.50 x 1-316
1/2" x 1.5"	6.000	3.000	0.875	SST7-54WWC-0.50 x 1.5-316
1/2" x 2"	6.500	3.250	1.000	SST7-54WWC-0.50 x 2-316
3/4" x 1"	5.500	2.750	1.000	SST7-54WWC-0.75 x 1-316
3/4" x 1.5"	6.000	3.000	1.000	SST7-54WWC-0.75 x 1.5-316
3/4" x 2"	6.500	3.250	1.125	SST7-54WWC-0.75 x 2-316
1" x 1.5"	6.000	3.000	1.125	SST7-54WWC-1 x 1.5-316
1" x 2"	6.500	3.250	1.250	SST7-54WWC-1 x 2-316
1.5" x 2"	6.500	3.250	1.500	SST7-54WWC-1.5 x 2-316

Note:
Not to
BPE
Dimension

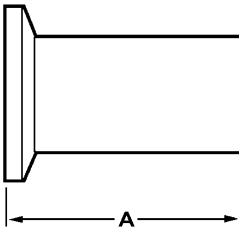


SST7-54MP-- Instrument Tee-- <u>All Ends Clamp</u>				
Tube OD (Size)	A	B	C	Part Number
1/2" x 3/4"	5.250	2.625	0.875	SST7-54MP-0.50 x 0.75-316
1/2" x 1"	5.500	2.750	0.875	SST7-54MP-0.50 x 1-316
1/2" x 1.5"	6.000	3.000	0.875	SST7-54MP-0.50 x 1.5-316
1/2" x 2"	6.500	3.250	1.000	SST7-54MP-0.50 x 2-316
3/4" x 1"	5.500	2.750	1.000	SST7-54MP-0.75 x 1-316
3/4" x 1.5"	6.000	3.000	1.000	SST7-54MP-0.75 x 1.5-316
3/4" x 2"	6.500	3.250	1.125	SST7-54MP-0.75 x 2-316
1" x 1.5"	6.000	3.000	1.125	SST7-54MP-1 x 1.5-316
1" x 2"	6.500	3.250	1.250	SST7-54MP-1 x 2-316
1.5" x 2"	6.500	3.250	1.500	SST7-54MP-1.5 x 2-316

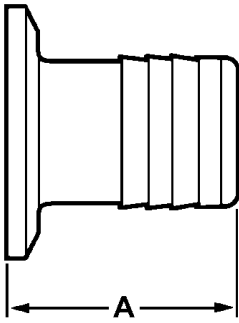
Note:
Not to
BPE
Dimension



SSBP9MP--- Clamp Cross			
Tube OD (Size)	A	B	Part Number
1/2"	4.500	2.250	SSBP9MP-0.5-316
3/4"	4.750	2.375	SSBP9MP-0.75-316
1"	5.250	2.625	SSBP9MP-1-316
1.5"	5.750	2.875	SSBP9MP-1.5-316
2"	6.750	3.375	SSBP9MP-2-316
2.5"	7.250	3.625	SSBP9MP-2.5-316
3"	7.750	3.875	SSBP9MP-3-316
4"	9.500	4.750	SSBP9MP-4-316

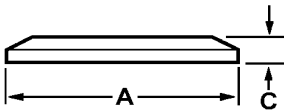


SST14AM7--- Bio-Pharm Ferrule		
Tube OD (Size)	A	Part Number
1/2"	1.750	SST14AM7-0.50-316
3/4"	1.750	SST14AM7-0.75-316
1"	1.750	SST14AM7-1-316
1.5"	1.750	SST14AM7-1.5-316
2"	2.250	SST14AM7-2-316
2.5"	2.250	SST14AM7-2.5-316
3"	2.250	SST14AM7-3-316
4"	2.250	SST14AM7-4-316



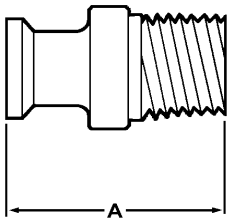
SSBP14MPHR--- Clamp End Rubber Hose Adapter			
Tube OD (Size)	A		Part Number 316L
1/2" x 1/4"	1.688		SSBP14MPHR- 0.5 x 0.25- 316
1/2" x 3/8"	1.688		SSBP14MPHR- 0.5 x 0.375- 316
1/2" x 1/2"	1.688		SSBP14MPHR- 0.5 x 0.5- 316
3/4" x 1/4"	1.688		SSBP14MPHR- 0.75 x 0.25- 316
3/4" x 3/8"	1.688		SSBP14MPHR- 0.75 x 0.375- 316
3/4" x 1/2"	1.688		SSBP14MPHR- 0.75 x 0.5- 316
3/4" x 3/4"	1.688		SSBP14MPHR- 0.75 x 0.75- 316
1" x 1"	1.688		SSBP14MPHR- 1 x 1- 316
1.5" x 1.5"	1.688		SSBP14MPHR- 1.5 x 1.5- 316
2" x 2"	2.313		SSBP14MPHR- 2 x 2- 316
2.5" x 2.5"	2.344		SSBP14MPHR- 2.5 x 2.5- 316
3" x 3"	3.094		SSBP14MPHR- 3 x 3- 316
4" x 4"	3.406		SSBP14MPHR- 4 x 4- 316

Note:
Not to
BPE
Dimension

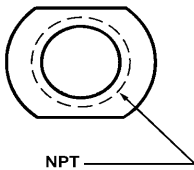


SSBP16AMP--- Solid End Cap			
Tube OD (Size)	A	C	Part Number 316L
1/2"-- 3/4"	0.984	0.188	SSBP16AMP-0.5-0.75-316
1"-- 1.5"	1.984	0.250	SSBP16AMP-1-1.5-316
2"	2.516	0.250	SSBP16AMP-2-316
2.5"	3.047	0.250	SSBP16AMP-2.5-316
3"	3.578	0.250	SSBP16AMP-3-316
4"	4.672	0.313	SSBP16AMP-4-316

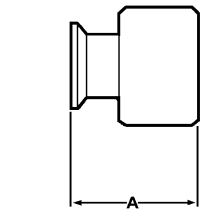
Note:
Not to
BPE
Dimension



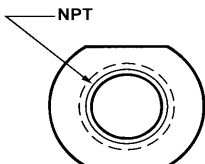
SSBP21MP-- Clamp x Male Adapter (MNPT)			
Tube OD (Size)	A		Part Number 316L
1/2" x 1/4"	2.000		SSBP21MP- 0.5 x 0.25- 316
1/2" x 3/8"	2.000		SSBP21MP- 0.5 x 0.375- 316
1/2" x 1/2"	2.000		SSBP21MP- 0.5 x 0.5- 316
3/4" x 1/4"	2.000		SSBP21MP- 0.75 x 0.25- 316
3/4" x 3/8"	2.000		SSBP21MP- 0.75 x 0.375- 316
3/4" x 1/2"	2.000		SSBP21MP- 0.75 x 0.5- 316
3/4" x 3/4"	2.000		SSBP21MP- 0.75 x 0.75- 316
1" x 1"	2.250		SSBP21MP- 1 x 1- 316
1.5" x 1.5"	2.000		SSBP21MP- 1.5 x 1.5- 316
2" x 2"	2.656		SSBP21MP- 2 x 2- 316
2.5" x 2.5"	3.281		SSBP21MP- 2.5 x 2.5- 316
3" x 3"	3.500		SSBP21MP- 3 x 3- 316
4" x 4"	3.813		SSBP21MP- 4 x 4- 316



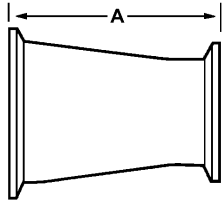
Note:
Not to
BPE
Dimension



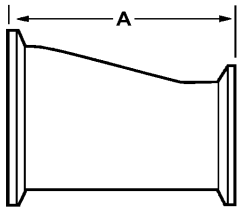
SSBP22MP-- Clamp x Female Adapter (FNPT)			
Tube OD (Size)	A		Part Number 316L
1/2" x 1/4"	1.500		SSBP22MP- 0.5 x 0.25- 316
1/2" x 3/8"	1.500		SSBP22MP- 0.5 x 0.375- 316
1/2" x 1/2"	1.500		SSBP22MP- 0.5 x 0.5- 316
3/4" x 1/4"	1.500		SSBP22MP- 0.75 x 0.25- 316
3/4" x 3/8"	1.500		SSBP22MP- 0.75 x 0.375- 316
3/4" x 1/2"	1.500		SSBP22MP- 0.75 x 0.5- 316
3/4" x 3/4"	1.500		SSBP22MP- 0.75 x 0.75- 316
1" x 1"	1.625		SSBP22MP- 1 x 1- 316
1.5" x 1.5"	2.250		SSBP22MP- 1.5 x 1.5- 316
2" x 2"	2.344		SSBP22MP- 2 x 2- 316
2.5" x 2.5"	2.094		SSBP22MP- 2.5 x 2.5- 316
3" x 3"	2.188		SSBP22MP- 3 x 3- 316
4" x 4"	2.625		SSBP22MP- 4 x 4- 316



Note:
Not to
BPE
Dimension



SSBP31-14MP: Clamp x Clamp <u>Concentric</u> Reducer		
Tube OD (Size)	A	Part Number 316L
3/4" x 1/2"	2.000	SSBP31-14MP- 0.75 x 0.5- 316
1" x 1/2"	2.500	SSBP31-14MP- 1 x 0.5- 316
1" x 3/4"	2.000	SSBP31-14MP- 1 x 0.75- 316
1.5" x 1/2"	3.500	SSBP31-14MP- 1.5 x 0.5- 316
1.5" x 3/4"	3.000	SSBP31-14MP- 1.5 x 0.75- 316
1.5" x 1"	3.000	SSBP31-14MP- 1.5 x 1- 316
2" x 1/2"	5.500	SSBP31-14MP- 2 x 0.5- 316
2" x 3/4"	5.000	SSBP31-14MP- 2 x 0.75- 316
2" x 1"	5.000	SSBP31-14MP- 2 x 1- 316
2" x 1.5"	3.000	SSBP31-14MP- 2 x 1.5- 316
2.5" x 2"	3.000	SSBP31-14MP- 2.5 x 2- 316
3" x 1.5"	7.000	SSBP31-14MP- 3 x 1.5- 316
3" x 2"	5.000	SSBP31-14MP- 3 x 2- 316
3" x 2.5"	3.000	SSBP31-14MP- 3 x 2.5- 316
4" x 1.5"	11.13	SSBP31-14MP- 4 x 1.5- 316
4" x 2"	9.125	SSBP31-14MP- 4 x 2- 316
4" x 2.5"	7.125	SSBP31-14MP- 4 x 2.5- 316
4" x 3"	5.125	SSBP31-14MP- 4 x 3- 316



SSBP32-14MP:Clamp x Clamp <u>Eccentric</u> Reducer		
Tube OD (Size)	A	Part Number 316L
3/4" x 1/2"	2.000	SSBP32-14MP- 0.75 x 0.5- 316
1" x 1/2"	2.500	SSBP32-14MP- 1 x 0.5- 316
1" x 3/4"	2.000	SSBP32-14MP- 1 x 0.75- 316
1.5" x 1/2"	3.500	SSBP32-14MP- 1.5 x 0.5- 316
1.5" x 3/4"	3.000	SSBP32-14MP- 1.5 x 0.75- 316
1.5" x 1"	3.000	SSBP32-14MP- 1.5 x 1- 316
2" x 1/2"	5.500	SSBP32-14MP- 2 x 0.5- 316
2" x 3/4"	5.000	SSBP32-14MP- 2 x 0.75- 316
2" x 1"	5.000	SSBP32-14MP- 2 x 1- 316
2" x 1.5"	3.000	SSBP32-14MP- 2 x 1.5- 316
2.5" x 2"	3.000	SSBP32-14MP- 2.5 x 2- 316
3" x 1.5"	7.000	SSBP32-14MP- 3 x 1.5- 316
3" x 2"	5.000	SSBP32-14MP- 3 x 2- 316
3" x 2.5"	3.000	SSBP32-14MP- 3 x 2.5- 316
4" x 1.5"	11.13	SSBP32-14MP- 4 x 1.5- 316
4" x 2"	9.125	SSBP32-14MP- 4 x 2- 316
4" x 2.5"	7.125	SSBP32-14MP- 4 x 2.5- 316
4" x 3"	5.125	SSBP32-14MP- 4 x 3- 316